

Edge Protection Hire

www.strongholdhire.com.au



Table of Contents

Bracket Systems	
· Pole-Up System	3
· Surface Mount System	4
· Parapet & Slab System	5
· Commercial System	6
· Handrail Post System	7
Components	8
About Us	10
The Stronghold Hire Way	11
Testimonials	12
Contact Info	13

Bracket Systems

TYPE 1

Pole up

BSBS Bracket

Great for new housing, reroofing, or projects where you need complete roof access. The EBR bracket uses surface pressure to push against the underside of the soffit or eaves.

Being able to install this system completely from the ground means the risk of working from height is minimal.

Compliant with the AS/NZS 4994.1 Temporary Edge Protection.



**WITH THIS
SYSTEM THE RISK
OF WORKING
FROM HEIGHT IS
MINIMAL**



TYPE 2

Surface Mount

EBCS Bracket

Great for bigger projects where needing to get to the roof edge is not required. This Bracket uses existing fasteners on any roof profile.

This versatile bracket can also be used as a floor mount bracket fastening into concrete, then being used for stairwells, voids, and separating people from hazards.

Compliant with the AS/NZS 4994.1 Temporary Edge Protection.



**GREAT FOR
BIGGER
PROJECTS &
VERY VERSATILE**

TYPE 3

Parapet & Slab Clamp

EBCP Bracket

This genius piece of engineering clamps onto existing parapet walls or concrete hobs.

Quick to install, this system reduces install time whilst working at height. This bracket is one of the most popular we stock at Stronghold Hire.

Compliant with the AS/NZS 4994.1 Temporary Edge Protection.



**THE MOST
POPULAR &
QUICK TO
INSTALL**



TYPE 4

Commercial Bracket

EBC Bracket

Don't be thrown off by the name this bracket can be used for both residential and commercial builds although better suited to bigger projects as it fixes into DHS purlins, timber purlins, and concrete tilt panels, this bracket can also be used on residential builds if drilling into the substrate is permitted.

This bracket allows for roof overhangs and gutters, this bracket is ideal for most surface mounting substrates.

Compliant with the AS/NZS 4994.1 Temporary Edge Protection.



**IDEAL BRACKET FOR
SURFACE MOUNTING
SUBSTRATES**

NEW!

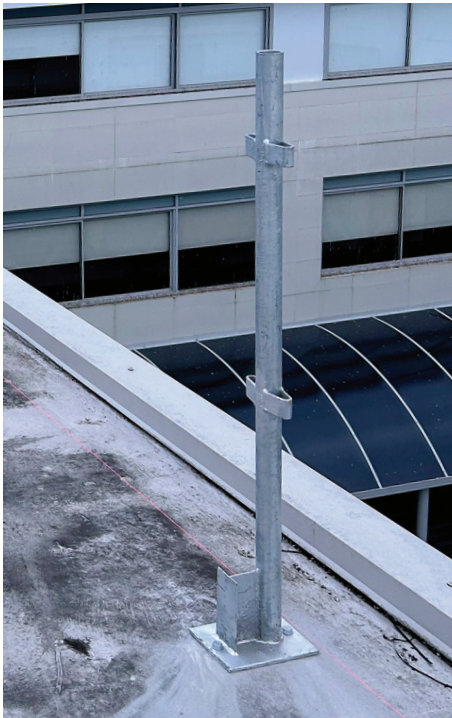
TYPE 5

Handrail Post System

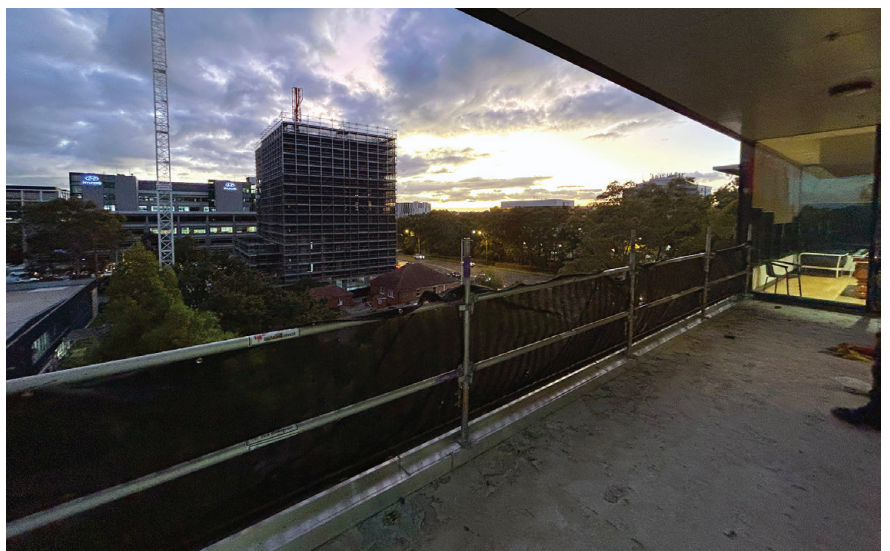
This system can be used for both fall protection and void protection.

Used with scaffolding ledgers or tube and fittings this system can span short distances or long runs.

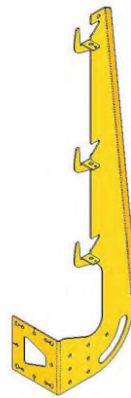
Fixing into rated concrete or timber this system is better suited to large commercials but can also be used on small jobs too.



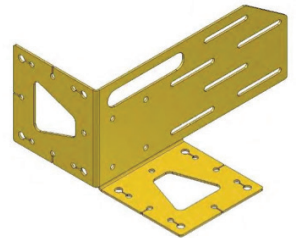
**FULLY ADJUSTABLE
TO SUIT THE
SMALLEST OR
LARGEST OF JOBS**



Components



EBC Bracket



EBC Multi Bracket



HC
(half clamp)



PT
(putlog
coupler)



SW
(swivel
coupler)



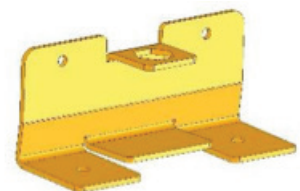
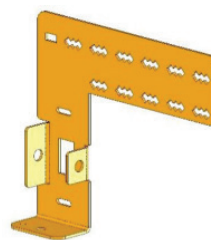
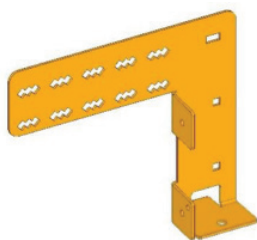
JNR
(external
joiner)



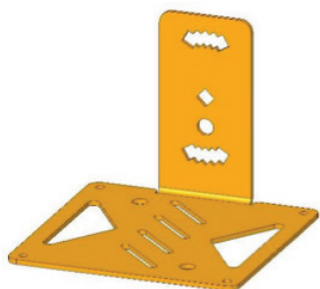
90DC
(90 degree
coupler)



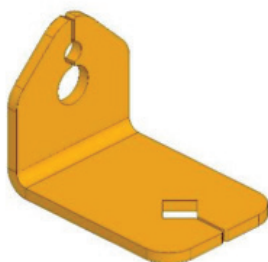
EBCP



These 3 parts make up the main components of the parapet clamp.



EBCS Surface Mount



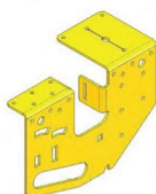
Toe Board Mount



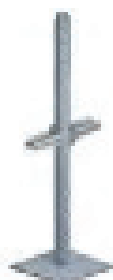
T6 grade aluminium tube meeting test requirements under AS/NZS4994.1:2009 Standard.



EBR
Bracket



EBRMB
(EBR multi
bracket)



BJACK
(adjustable
base jack)



GEM
(gable end
mount)

About Us



We have over 25 years of combined experience in the scaffolding and labour hire.

Our Background

Our clients range from government bodies and large construction companies through to smaller sub-contractors such as painters, plumbers, lift installers, electricians, roof tilers, and renderers. Alongside these, a large percentage of our customers are homeowners carrying out both minor and major renovations. Due to the growing demand and the change of legislation the natural progression was to add roof edge protection to the list of services we offer. Since we first expanded, we have invested heavily in staff training ensuring our high standards were transferred across and new skills learned and developed. We have also invested heavily in what we believe is one of the best edge rail systems in Australia.

Tested to meet the AS/NZS4994.2 the Temporary Edge Protection General Requirements standard the E-Bracket® systems are sure to keep you safe.

Our Aim

We aim to provide safety solutions to the people of NSW. With our vision, we aim to keep those at high risk safe. We want to ensure everyone goes home as they came.

Careers

Stronghold Hire is always looking for the next generation of safety systems installers. If you have scaffolding or edge rail experience fill in the form and we will get in touch as soon as possible. Full Training will be given to the right candidate with the opportunity to gain nationally recognized government body qualifications.

[APPLY HERE](#)

The Stronghold Hire Way



There are always right and wrong ways to do things. At Stronghold, we believe in doing things the right way, the safest way, and the most efficient way.

We make sure each project follows the New South Wales Safe Works Method.

This includes but is not limited to:

1. Site Visit

Where reasonably practicable we undertake a site visit before any work is carried out.

2. Risk Assessment

After conducting a site visit, we complete a full risk assessment before any work goes ahead to ensure people, the environment, and equipment is not put at risk.

3. Safe Work Method Statement

As part of the risk assessment, we complete S.W.M.S. Theses are site-specific and each installation team and site team sign up to these to ensure they understand the methods and procedures before starting any work on site.

4. Toolbox Talk & Emergency Plan

On arrival at the site, our team supervisor conducts toolbox talks on the morning of the installation after the team has read through the S.W.M.S. In the toolbox talk, they outline the emergency plan and what hazards to look out for amongst other key information.

5. Installation

Only after all these prior steps have been completed do we start the installation.

6. Handover Certificate

After the installation is complete and we are happy that it is fully compliant with the AS/NZS4994.2 standard do we then sign off the edge rail system and issue the handover certificate.

7. Removal & Clean-up

We then ensure no waste is left on site. The hire of the edge rail then starts until we are called back for the removal.

Testimonials



“Working within the challenging restrictions of a hospital environment and on short notice, the Stronghold crew was amazingly efficient, precise and approachable. We are very appreciative of their generosity, they provide a great service and are genuine, easy people to work with.”

Sydney Children's Hospital Foundation & NBS

“I find them very reliable, well priced and very accommodating with urgent requests. Overall the team at Stronghold deliver on their promises, operate in a safe and diligent manner and are able to provide any form of scaffolding requested. I would not hesitate to recommend them to any other business.”

Daniel Alfonso - Director
Sydney Construction Group P/L



Get In Touch

Contact us if you require more information



02 8985 2020



Info@strongholdhire.com.au



Site 06506, Ulm Avenue,
Mascot, NSW 2020

www.strongholdhire.com.au

EDGE 
PROTECTION HIRE